



### ENERGY SAVING SYSTEM

Component insulation and smart electronics for maximum energy efficiency



### VOLUMETRIC PUMP PERFORMANCE

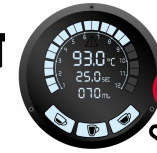
The unique 79.3 US gal - 300 l/h pump guarantees constant pressure in all conditions of machine use

### HIGH PERFORMANCE FLOWMETER VOLUMETRICS

For an accurate and precise coffee dose in the cup



## Take a ride, explore its essence



Smart-touch setting of the individual groups

### EVERYTHING UNDER CONTROL

System digital display to provide visibility of all working parameters



### HEART OF STEEL

For maximum thermal stability:

- Groups in AISI 316L, weight 17.6 lb / 8 kg each
- Portafilters AISI 316
- Boilers AISI 316

### ADJUSTABLE HEIGHT WORK SURFACE

Innovative Sanremo "All in one" suspension system that allows cups of different shapes and heights (adjustable from 3.35 to 5.90 inches / from 85 to 150 mm)



### SOFT PRE-INFUSION

Flowactive System: for precise control of the water flow and pre-infusion time



### POWER DRY STEAM

Low additional liquid during the milk steaming



### EASY SERVICE

Fast access to the internal parts for quick and easy technical service



Café Racer, born to run  
Download the catalog

## Characteristics



**AISI 316L STEEL GROUPS WITH 17.6 lb / 8 kg PURE STEEL**  
Exclusive Sanremo design ensure exceptional thermal stability and maximum resistance to oxidation and lime scale.



**AISI 316 STAINLESS STEEL FILTER HOLDER WITH "COMPETITION FILTER"**  
Exclusive Sanremo design, with shape and volume designed to capture the best coffee aromas and fragrances.



**AISI 316L STAINLESS STEEL FREE MOTION STEAM TAPS**  
Flexible control system for producing and dispensing steam.



**AISI 316L STAINLESS STEEL STEAM WAND "COOL TOUCH"**  
Anti-burning feature even in conditions of prolonged use, fitted with "Latte Art" high-performance steam terminals.



**PROGRAMMABLE ELECTRONIC PRE-INFUSION**  
Allows control with 0.1 second tolerance of the flow of water that wets the coffee bed, with programming of 4 different profiles for each group.



**INDEPENDENT ADJUSTMENT OF THE PID INFUSION WATER TEMPERATURE**  
Precision setting (gradient  $\pm 0.5$  °C with measured constancy lower than 0.2°C).



**SYSTEM DISPLAY**  
Visibility of all the machine functions: temperatures, pressures and levels.



**COFFEE UNIT SINGLE DISPLAY**  
Control of all coffee extraction parameters.



**MIXED INFUSION HOT WATER FOR TEA AND HERBAL TEAS**  
Instantaneous mixing of fresh water and steam for a better chemical and organoleptic quality.



**HIGH PERFORMANCE VOLUMETRIC PUMP**  
79.3 US gal - 300 l/h \*\*\*  
Pressure stability also with prolonged and contemporary use of more than one group.



**HIGH PERFORMANCE FLOWMETER VOLUMETRICS**  
For an accurate and precise coffee dose in the cup.



**STEAM CONTROL ADJUSTABLE ELECTRONIC PRESSURE SWITCH**  
Sensor with 0.02 bar precision that allows the chosen pressure and steam in the boiler to be kept constant in all conditions of use.



**PROGRAMMABLE CUP WARMER TEMPERATURE**  
Allows the cups to be kept at the optimum temperature in the most different climatic conditions.



**ELECTRONIC AUTO-LEVEL**  
Through an electronic level probe the boiler is automatically filled and maintained to the right filling level.



**LED LIGHTING OF THE WORK AREA**  
Allows efficient working in any condition of environmental lighting.



**AUTO-DIAGNOSIS, STATISTICAL DATA, SCHEDULED MAINTENANCE**  
Maintenance can be scheduled according to litres or number of coffees dispensed.



**AUTO-ON, AUTO-OFF AND DAY-OFF FUNCTION**  
Programmable on-off timer for each day and/or daily timetables.



**AUTOMATIC CLEANING CYCLE**  
Process for coffee groups cleaning.



**BOILER WATER REGENERATION**  
Ensures resetting of the optimum chemical characteristics of the water and correct mineralisation.



**GROUP FLUSHING**  
With a simple pressure of the button a small quantity of water is dispensed to allow the group to be always clean.



**STAINLESS STEEL NAKED FILTER HOLDERS**



**HIGH POWER STEAMER TERMINAL**  
(bigger holes diameter)



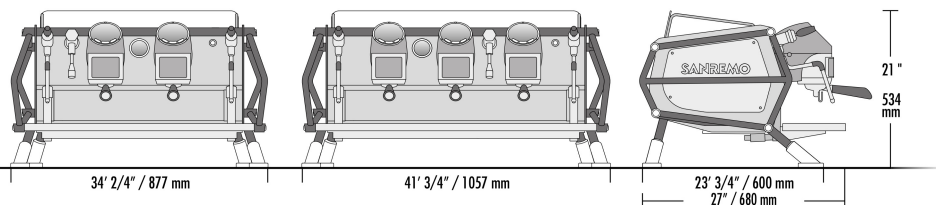
**EXTERNAL VOLUMETRIC PUMP**



**ENHANCED RESISTANCE**

# Café Racer

## Versions



### 2 group CR

- 2 steam taps
- 1 water tap
- 1 one-cup filter holder
- 2 two-cup filter holders

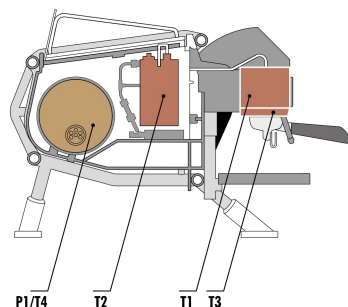
### 3 group CR

- 2 steam taps
- 1 water tap
- 1 one-cup filter holder
- 3 two-cup filter holders



### MULTIBOILER SYSTEM

Sanremo Café Racer multiboiler system ensures a new level of thermal precision thanks to the 4 points of temperature PID control.



## Technical data

		2 group	3 group
voltage	V	220-240 1N	380-415 3N
power input	kW	6.9	8.1
steam boiler capacity	li	8	10
services boiler resistance power	kW	3.5	3.5
external pump power	kW	0.160	0.160
preheating boiler capacity	li	1.6	1.6
preheating boiler resistance power	kW	1.0	1.5
cup-heater power	kW	0.16	0.2
units boiler capacity	li	1.0	1.5
units boiler resistance power	kW	1.6	2.4
net weight	lb / kg	214 / 97	265 / 120
gross weight (with shipping crate)	lb / kg	333 / 151	388 / 176

All images are subject to illustrative purpose. The manufacturer reserves the right to modify without prior notice the technical characteristics indicated above.



NAKED

Choose your style,  
dress up your Café Racer.



FREEDOM



CUSTOM